

# Sedimentary Rocks

Dr. Ryan J McCarty

# Class

Clastic

Biochemical

Organic

Chemical

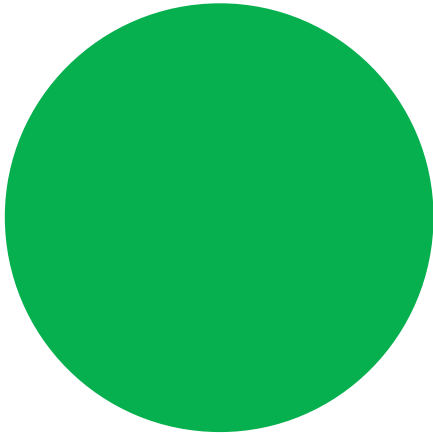
# Clast size

Grain	Size
gravel	larger than 2 mm
Sand	2 to 0.0625
silt	0.0625 to 0.004 mm
clay	less than 0.004 mm

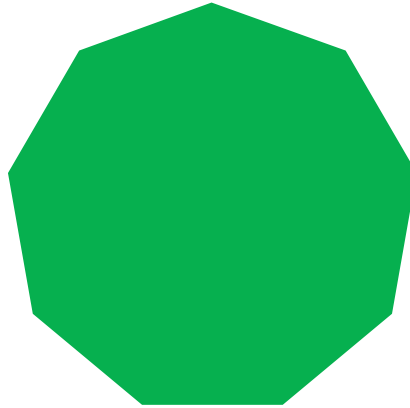
# Composition

The mineral quiz says  
your experts

# Angularity



Low

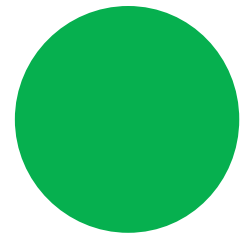


High

# Sphericity

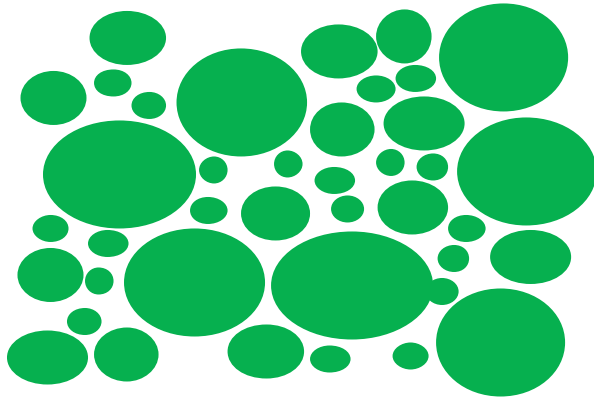


Low

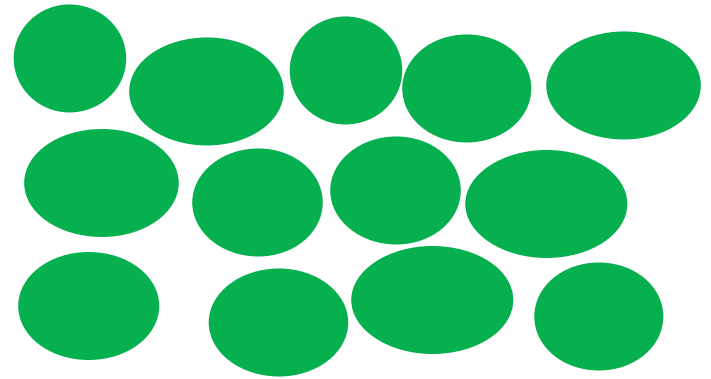


High

# Sorting



Low

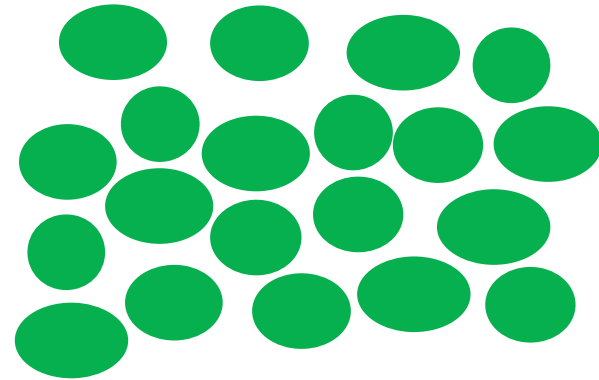


High

# Porosity



Low



High



# Cement

SiO<sub>2</sub>

CaCO<sub>3</sub>

Chalk



# Chalk



Chalk



Chalk



Coquina



Limestone



Limestone





# Limestone



Limestone



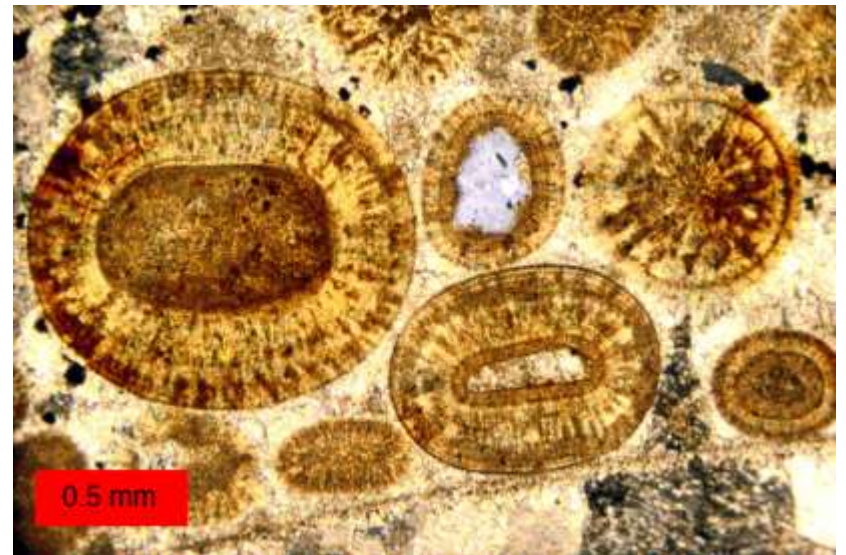
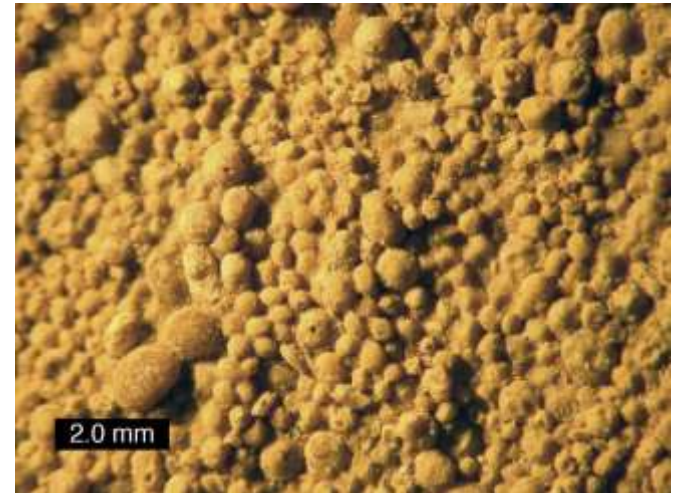
Limestone



Limestone



# Limestone



Limestone



Fossiliferous limestone



Fossiliferous limestone





Fossiliferous limestone



Fossiliferous limestone



Fossiliferous limestone



Fossiliferous limestone



# Fossiliferous limestone



# Fossiliferous limestone



# Fossiliferous limestone



Diatomite





# Diatomite



# Diatomite



# Diatomite



# Diatomite



# Diatomite



Chert



Chert



Chert





Chert



Chert



Chert



Mudstone



Mudstone



Mudstone



Mudstone



# Mudstone





# Mudstone



Mudstone (Shale)



Mudstone (Shale)



# Mudstone (Shale)



# Mudstone (Shale)



Mudstone (Shale)



# Mudstone (Shale)



Quartz sandstone





Quartz sandstone



# Quartz sandstone



# Quartz sandstone



Quartz sandstone



Quartz sandstone



Quartz sandstone



Quartz sandstone



Quartz sandstone





Quartz sandstone



# Greywacke



Greywacke



Greywacke



Greywacke



Greywacke



Greywacke



Greywacke





Greywacke



Arkose



Arkose



# Conglomerate



Conglomerate



Conglomerate



Breccia



Breccia





# Breccia



# Breccia



Breccia



Breccia



Breccia



Breccia



Breccia



# Travertine





# Travertine



# Rock Salt



# Peat



# Lignite



# Bituminous Coal



# Oil shale

